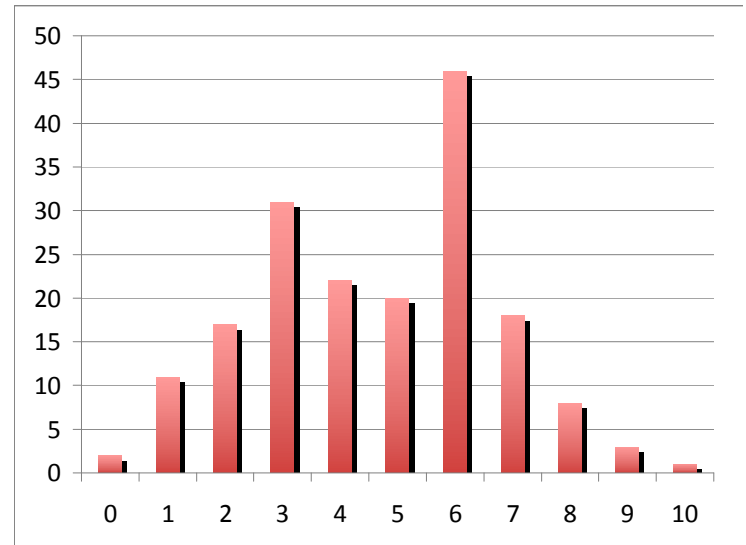


scangrade v. 1.1 Apr 19 2012 16:39:44
 graded on Tue 5/1/2012 22:08:49

key A ADEEA DBAEE
 key B CDBEA EABEB
 key C EBBCE BBACB
 key D BCBBE DDDAB

Tform	Qcode	Order	Raw Score	% Score	Responses	Scoring
B	102	68	3	30	BCBEC ABBAE	XXccX XXcXX
D	104	118	6	60	BCBDE ADCBB	cccXc XcXXc
C	105	165	4	40	EDDED ABADB	cXXXX XccXc
C	109	113	5	50	AABEC BBDCB	XXcXX ccXcc
C	112	102	4	40	DBECC DBBCA	XcXcX XcXcX
A	114	66	4	40	EDECC DEBEA	XccXX cXXcX
A	115	88	4	40	EDCCA DBBCD	XcXXc ccXXX
C	117	155	3	30	EBADC BEEDC	ccXXX cXXXX
B	120	70	4	40	CBBBD ADBED	cXcXX XXccX
D	124	30	3	30	CDBBE CBABE	XXccc XXXXX
D	125	115	5	50	CC-BE DCBBB	XcXcc cXXXc
A	127	125	6	60	AAAED DBAEA	cXXcX ccccX
D	128	61	3	30	CBECB ADDAE	XXXXX XcccX
C	129	106	6	60	DBECE DBBCB	XcXcc XcXcc
C	130	7	6	60	EBECE EBADA	ccXcc XccXX
C	131	4	9	90	EBBCE BBADB	cccc cccXc
D	132	104	3	30	ABDBA ADEAC	XXXcX XcXcX
B	134	152	6	60	CBBCB EBBEB	cXcXX cXccc
B	135	135	1	10	ABBBC DCACA	XXcXX XXXXX
D	138	55	7	70	CCBBE DCDBB	Xcccc cXcXc
D	139	35	3	30	EDBBA ECCAD	XXccX XXXcX
B	140	23	3	30	CCBBB ADAED	cXcXX XXXcX
A	141	112	2	20	EDACD BECEB	XcXXX XXXcX
C	143	117	7	70	ABBCC BBBCB	XcccX ccXcc
A	144	163	2	20	AEBCD BEEED	cXXXX XXXcX
A	152	148	2	20	BDCAE DCCCB	XcXXX cXXXX
D	154	52	4	40	BCABC ECCBB	ccXcX XXXXc

0	2
1	11
2	17
3	31
4	22
5	20
6	46
7	18
8	8
9	3
10	1



B	155	92	6	60	CEBDA	EBAEB	cXcXc	cXXcc	
A	158	171	2	20	CBEBE	BCBEC	XXcXX	XXXcX	
C	159	153	6	60	ECBCD	ABBCB	cXccX	XcXcc	
C	163	46	6	60	EBACD	CBADB	ccXcX	XccXc	
C	165	82	3	30	AEADB	CBBCB	XXXXX	XcXcc	
A	171	119	2	20	CDAAB	BECBE	XcXXX	XXXXc	
A	172	24	8	80	ADEEA	DCAEB	cccc	cXccX	
A	174	33	6	60	CDEED	BBAEB	XcccX	XcccX	
A	176	105	6	60	ADECE	BBAED	cccXX	XcccX	
C	183	38	6	60	ABBCE	BEBDB	Xcccc	cXXXc	
B	184	71	4	40	CBBED	CCAED	cXccX	XXXcX	
C	186	9	6	60	EABCC	ABADB	cXccX	XccXc	
D	190	123	6	60	BCBAE	DCABB	cccXc	cXXXc	
B	192	1	5	50	CBBEb	ACBED	cXccX	XXccX	
B	195	56	7	70	CDBED	BABED	ccccX	XcccX	
A	196	47	5	50	ADECE	BBCEB	cccXX	XcXcX	
C	198	169	3	30	DEBAC	ABBCE	XXcXX	XcXcX	
A	199	108	3	30	DAADB	BBCEE	XXXXX	XcXcc	
C	202	137	1	10	AAEED	AEbDB	XXXXX	XXXXc	
D	203	17	6	60	BCBBA	DCBBB	ccccX	cXXXc	
C	205	93	4	40	ECCEB	ABDCB	cXXXX	XcXcc	
D	206	76	7	70	BCDBE	BDBAB	ccXcc	XcXcc	
A	207	176	8	80	AAEEA	DBAEB	cXccc	ccccX	
D	212	101	6	60	BCBBE	CCDBE	cccc	XXcXX	
A	213	94	9	90	ADAEA	DBAEE	ccXcc	cccc	
A	217	85	7	70	ADECC	DBAEA	cccXX	ccccX	
A	218	103	10	100	ADEEA	DBAEE	cccc	cccc	
B	219	134	3	30	BBCEC	DCBAB	XXXcX	XXcXc	
C	220	60	8	80	EBBCD	BBADB	ccccX	cccXc	
B	222	126	2	10	DBBDD	ACAED	XXcXX	XXXcX	penalty
A	223	48	6	60	EDABA	DBAEB	XcXXc	ccccX	
D	231	107	5	50	BCABB	DCCBB	ccXcX	cXXXc	
B	234	63	8	80	CBBEA	EDBEB	cXccc	cXccc	
A	236	64	2	20	CDACB	ABBCC	XcXXX	XcXXX	

A	239	26	7	70	ADEBA	DCAEC	cccXc	cXccX
B	240	114	7	70	CDBEA	ACBED	cccc	XXccX
D	241	42	4	40	BCEBC	DCEBE	ccXcX	cXXXX
A	242	124	2	20	CEAAD	BEAEC	XXXXX	XXccX
C	244	173	2	20	BEBED	ACBCD	XXcXX	XXcXc
D	246	72	3	30	ECCCD	EDBCB	XcXXX	XcXXc
B	248	34	5	50	CDACB	EAABB	ccXXX	ccXXc
B	249	77	7	70	CBEBE	EDBEB	cXccX	cXccc
C	250	18	5	50	ABBCE	BAEDE	Xcccc	cXXXX
D	254	98	6	60	BCBBB	BDBCB	ccccX	XcXXc
D	257	100	6	60	BCBBB	EDDBE	ccccX	XccXX
D	262	128	8	80	BCBBE	CDDAC	cccc	XcccX
A	265	81	3	30	EDACB	BBEEA	XcXXX	XcXcX
B	268	13	1	10	ABACE	DCADB	XXXXX	XXXXc
D	270	78	4	40	CCBBA	BCBBB	XcccX	XXXXc
B	271	21	6	60	CBEBE	CDBEB	cXccX	XXccc
A	275	89	4	40	BDABD	DCAEA	XcXXX	cXccX
C	276	86	6	60	ADDCA	BBACB	XXcXc	cccc
B	278	54	8	80	CBBEA	EAAEB	cXccc	ccXcc
D	279	151	6	60	CBBBD	DDDEB	XXccX	cccXc
D	285	129	1	10	CBDAB	ECCAD	XXXXX	XXcXc
B	286	136	1	10	BBCEE	BCADC	XXcXc	XXXXX
C	287	49	2	20	ABECB	DEBDC	XcXcX	XXXXX
B	288	150	3	30	CC-?B	DDBCB	cXXXX	XXcXc
C	293	91	5	50	EBBCD	CBBEC	ccccX	XcXXX
C	295	130	6	60	ABBCE	CBDAB	Xcccc	XcXXc
B	296	164	7	70	CBEBE	BABEB	cXccX	Xcccc
C	297	20	5	50	EBECD	EBCDB	ccXcX	XcXXc
B	301	97	4	40	CCBED	ABAEC	cXccX	XXcXc
A	302	175	1	10	CADCB	DCDCC	XXXXX	cXXXX
C	303	80	3	30	ABEAC	BAADA	XcXXX	cXcXX
A	307	147	1	10	BADAD	BCBBE	XXXXX	XXXXc
B	311	8	6	60	CBEBE	ECCEB	cXccX	cXXcc
D	317	140	3	30	CBBBA	ECEBB	XXccX	XXXXc

B	318	39	7	70	CCBEE	DABEB	cXccX	Xcccc
B	319	32	3	30	CDABB	CCBAA	ccXXX	XXcXX
A	320	25	1	10	CEAEB	BCDCB	XXXcX	XXXXX
C	321	116	5	50	ACECE	BBDDB	XXXcc	ccXXc
C	324	37	6	60	CBBCD	BBBDB	XcccX	ccXXc
A	329	144	7	70	ADAEC	DBAEA	ccXcX	ccccX
D	334	59	3	30	CCDBE	EBBBD	XcXcc	XXXXX
A	335	53	7	70	CDEEA	DCAEB	Xcccc	cXccX
D	337	40	2	20	ABDAC	DECAE	XXXXX	cXXcX
A	340	43	6	60	ADAAB	DBAEC	ccXXX	ccccX
A	341	6	4	40	CDAED	BBAAB	XcXcX	XccXX
C	342	96	5	50	EBBAD	BBBDA	cccXX	ccXXX
C	343	138	3	30	AEBED	ABBBD	XXcXX	XcXcX
C	345	36	4	40	DAECC	EBADB	XXXcX	XccXc
D	346	159	5	50	BCDBD	DABCB	ccXcX	cXXXc
C	348	28	5	50	EBECD	CBCDB	ccXcX	XcXXc
D	354	19	6	60	ECBBE	ECDBB	Xcccc	XXcXc
A	356	133	5	50	AEEEC	EBABA	cXccX	XccXX
C	358	44	2	20	DCECC	DABAB	XXXcX	XXXXc
B	363	122	6	60	CBEBE	EAAEE	cXccX	ccXcX
D	364	157	4	40	CCBEB	BDBAD	XccXX	XcXcX
B	366	22	7	70	BDBEA	ACBEB	Xcccc	XXccc
B	368	84	3	30	BBBEC	ACBAC	XXccX	XXcXX
B	371	2	7	70	CBBEA	ECAEB	cXccc	cXXcc
B	372	146	2	20	CBAAD	BCADB	cXXXX	XXXXc
D	373	41	3	30	EBDEA	DCDEB	XXXXX	cXcXc
C	374	158	2	20	EBABD	ECBDD	ccXXX	XXXXX
C	375	10	7	70	DBBCE	BBBDB	Xcccc	ccXXc
B	376	99	4	40	CBEBE	ADAEC	cXccX	XXXcX
C	377	57	6	60	EBBCB	DBBDB	ccccX	XcXXc
A	380	162	0	0	CADCB	BDCAB	XXXXX	XXXXX
D	385	11	8	80	BCBBA	BDDAB	ccccX	Xcccc
D	387	74	3	30	CEBBB	ACBBB	XXccX	XXXXc
D	391	3	3	30	CCEBD	BCBBB	XcXcX	XXXXc

B	392	27	6	60	CBBEB	EBBAB	cXccX	cXcXc
C	397	5	6	60	EDBCC	DBACA	cXccX	XcccX
D	400	83	6	60	CADBE	DDBAB	XXXcc	ccXcc
D	401	154	1	10	EBEDA	ACDBE	XXXXX	XXcXX
C	404	45	6	60	EBDCE	ABDDB	ccXcc	XcXXc
C	407	29	5	50	EBCDE	ABEDB	ccXXc	XcXXc
A	408	90	6	60	EDAED	BBAEE	XcXcX	Xcccc
B	410	127	6	60	CBBEA	ADBED	cXccc	XXccX
A	412	79	7	70	ADAEC	DBAEA	ccXcX	ccccX
A	413	120	3	30	CBCEB	DCAAA	XXXcX	cXcXX
A	414	14	6	60	ADAEB	BBAEA	ccXcX	XcccX
D	416	160	6	60	BCABB	DDCAE	ccXcX	ccXcX
B	419	167	1	10	EBCAC	BCBBC	XXXXX	XXcXX
D	420	62	5	50	ECBBD	BDCBB	XcccX	XcXXc
A	423	168	4	40	BBEBB	DBCDE	XXcXX	ccXXc
B	424	65	3	30	BEDED	BEBEC	XXXcX	XXccX
B	426	87	5	50	CBACA	EDBBB	cXXXc	cXcXc
B	428	31	6	60	CBDEA	BABED	cXXcc	XcccX
D	431	172	3	30	AADBB	DCEBB	XXXcX	cXXXc
B	432	109	4	40	DBBCB	CCBEB	XXcXX	XXccc
C	433	15	6	60	EBECE	BADDB	ccXcc	cXXXc
B	434	156	3	30	CDABA	BDAAE	ccXXc	XXXXX
C	435	51	8	80	EBECC	BBACB	ccXcX	cccc
A	437	143	3	30	CAEBA	DDCAA	XXcXc	cXXXX
D	439	111	2	20	EBEAA	CCAAB	XXXXX	XXXcc
C	440	174	4	40	BBBDC	ABDCE	XccXX	XcXcX
C	441	139	2	20	AEECC	DEBCE	XXXcX	XXXcX
D	444	69	3	30	BBDAC	CADBB	cXXXX	XXcXc
A	445	67	3	30	BDDAE	BDAEC	XcXXX	XXccX
C	448	121	6	60	EBECE	BADDB	ccXcc	cXXXc
D	450	141	6	60	CCBBA	DDBBB	XcccX	ccXXc
B	452	16	6	60	CDBDA	EBCED	cccXc	cXXcX
D	453	50	6	60	BCABB	DDBBB	ccXcX	ccXXc
B	454	149	4	40	DDBDD	DABCA	XccXX	XccXX

A	464	75	6	60	ADAEE	BCAEE	ccXcX	XXccc	
D	465	95	9	90	BCBBA	DDDAB	ccccX	cccc	
A	468	132	2	20	EDACE	BAABC	XcXXX	XXcXX	
B	478	166	1	10	BBEEE	BDACE	XXXcX	XXXXX	
B	480	58	5	50	CBAEB	BEBEB	cXXcX	XXccc	
B	483	131	5	50	CBCEC	AACEB	cXXcX	XcXcc	
A	490	145	3	30	EDAEC	ABDAD	XcXcX	XcXXX	
D	491	161	6	60	CCABB	DDEAB	XcXcX	ccXcc	
A	493	12	7	70	CDEEA	BBAEB	Xcccc	XcccX	
B	494	142	7	70	CBBEA	EADCB	cXccc	ccXXc	
A	495	110	6	60	CDAEE	DBAEB	XcXcX	ccccX	
C	498	73	4	40	ABBAC	BBEAC	XccXX	ccXXX	
D	500	170	4	40	ABDBB	DCDAE	XXXcX	cXccX	
A	292	hand	5	50	CDAEE	BBAEB	XcXcX	XcccX	
A	274	hand	0	0	CEDDB	AEDBC	XXXXX	XXXXX	
A	475	hand	6	50	ADAEB	DEAEA	ccXcX	cXccX	penalty

	n	avg	dev	min	max
Form A	44	45	24.1	0	100
Form B	45	46.2	20.5	10	80
Form C	44	48.4	18	10	90
Form D	43	46.3	18.8	10	90
Aggregate	176	46.5	20.5	0	100

FA:Answer	Correct	None	A	B	C	D	E
A	16	0	16	5	14	1	8
D	30	0	7	3	0	30	4
E	15	0	21	1	3	4	15
E	19	0	6	6	12	1	19
A	10	0	10	11	6	9	8
D	21	0	2	20	0	21	1
B	24	0	1	24	11	3	5
A	26	0	26	5	8	3	2
E	29	0	5	4	5	1	29
E	8	0	11	13	8	4	8

FB:Answer	Correct	None	A	B	C	D	E
C	32	0	2	7	32	3	1
D	8	0	0	30	5	8	2
B	30	1	7	30	4	2	1
E	28	1	2	5	5	4	28
A	12	0	12	15	6	8	4
E	13	0	12	10	4	6	13
A	10	0	10	6	16	11	2
B	25	0	16	25	3	1	0
E	28	0	6	3	5	3	28
B	22	0	3	22	6	10	4

FC:Answer	Correct	None	A	B	C	D	E
E	21	0	14	2	1	6	21
B	28	0	4	28	4	3	5
B	20	0	4	20	2	3	15
C	29	0	4	1	29	4	6
E	12	0	1	4	14	13	12
B	17	0	11	17	5	7	4
B	32	0	5	32	2	0	5
A	11	0	11	19	2	8	4
C	15	0	3	0	15	25	1
B	28	0	5	28	4	3	4

FD:Answer	Correct	None	A	B	C	D	E
B	17	0	4	17	15	0	7
C	27	0	2	11	27	2	1
B	20	1	5	20	1	11	5
B	32	0	5	32	2	2	2
E	11	0	11	11	4	6	11
D	18	0	5	7	5	18	8
D	18	0	2	2	20	18	1
D	13	0	3	14	8	13	5

A	15	0	15	23	3	0	2
B	28	0	0	28	2	4	9