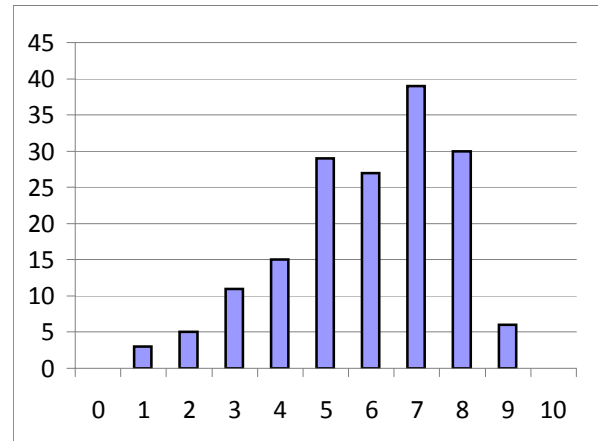


scangrade v. 1.2 May 12 2012 9:17:09  
 graded on Sun 6/10/2012 0:32:29

key A BBAEB BAABA  
 key B ADABA DECAC  
 key C BEBCB EDDCE  
 key D BEDBB CBEBE

Tform	Qcode	Order	Raw Score	% Score	Responses	Scoring
A	102	164	4	40	EBEBD BDABB XcXXX cXccX	
C	105	108	7	70	AEBEB EDBCE XccXc ccXcc	
C	109	97	2	20	EBDED ACDCB XXXXX XXccX	0 0
A	112	113	8	80	BBAED EAABA ccccX Xcccc	1 3
C	114	111	1	10	DEDBD BBCAC XcXXX XXXXX	2 5
D	115	4	5	50	EECAB CAEBD XcXXc cXccX	3 11
C	117	154	5	50	ABDCB EDCAE XXXcc ccXXc	4 15
A	120	131	3	30	DBAAD DDCBC XccXX XXXcX	5 29
A	124	73	8	80	BBAEB BDADA ccccc cXcXc	6 27
C	125	13	7	70	BEBEB ADCCE cccXc XcXcc	7 39
A	128	49	7	70	ABAEB BAADC Xcccc cccXX	8 30
A	129	110	5	50	BDAED AABBC cXccX XcXcX	9 6
C	130	101	6	60	ABDCB ADDCE XXXcc Xcccc	10 0
C	131	152	5	50	BEDDB ADCBE ccXXc XcXXc	
B	132	120	3	30	ACABC ADDED cXccX XXXXX	
C	135	65	6	60	AEBCE BDDBE XcccX XccXc	
D	138	122	7	70	BEDCB CBCCE cccXc ccXXc	
B	139	85	5	50	ABABB DCCDD cXccX cXcXX	
A	140	90	4	40	DBDBD BDABB XcXXX cXccX	
C	143	23	7	70	BEECB BDDBE ccXcc XccXc	
D	144	150	7	70	BECBB ABEBD ccXcc XcccX	
D	146	55	6	60	BDDBB CABBC cXccc cXXcX	
A	150	60	1	10	CABED CDEAB XXXcX XXXXX	
B	152	106	7	70	ADACA DEACC cccXc ccXXc	
A	154	71	8	80	BBEBB BAABC ccXcc ccccX	
B	155	158	6	60	ADABA ADCCB ccccc XXcXX	
B	158	145	3	30	CDEBB DCABD XcXcX cXXXX	
A	159	159	9	90	BBAEB CAABA ccccc Xcccc	



D	163	128	9	90	BEDBA	CBEBE	ccccX	cccc	
D	171	63	4	40	CADAB	CAECC	XXcXc	cXcXX	
C	172	74	8	80	BEECE	EDDCE	ccXcX	cccc	
A	174	64	7	70	BBABD	BAADA	cccXX	cccXc	
C	176	3	3	30	ABDCD	BDDAB	XXXcX	XccXX	
C	183	75	7	70	ABBCB	BDDCE	XXccc	Xcccc	
D	184	28	4	40	EEBBC	EAEBC	XcXcX	XXccX	
B	186	59	9	80	ADABB	DECAC	ccccX	cccc	penalty
D	190	102	6	60	BDCBB	CB-EE	cXXcc	ccXXc	
B	192	22	5	50	AEDBD	AEDAC	cXXcX	XcXcc	
D	195	46	7	70	BEBBA	CBEBA	ccXcX	ccccX	
D	196	78	5	50	BBCBB	CBCED	cXXcc	ccXXX	
A	198	157	2	20	BADAB	EDCAC	cXXXc	XXXXX	
B	199	115	7	70	ADABA	DDAAB	cccc	cXXcX	
B	203	151	7	70	ABABB	DECCC	cXccX	cccXc	
D	205	66	7	70	BEDB-	CBCBD	ccccX	ccXcX	
D	206	44	4	40	CBEBA	CCEBC	XXXcX	cXccX	
B	207	165	8	80	ABABA	DECCC	cXccc	cccXc	
A	212	99	6	60	DCABB	AAABA	XXcXc	Xcccc	
D	213	153	5	50	BDDBA	ABCCE	cXccX	XcXXc	
B	217	32	6	60	ADACE	ADCAC	cccXX	XXccc	
B	218	134	7	70	AEABA	DDCAD	cXccc	cXccX	
C	219	109	5	50	BBBCD	BDADE	cXccX	XcXXc	
B	220	39	7	70	ADABA	DEEBD	cccc	ccXXX	
A	222	93	5	50	ABBED	BA?-A	XcXcX	ccXXc	
C	223	124	8	80	BEECE	EDDCE	ccXcX	cccc	
A	231	80	4	40	ABBAB	CADBD	XcXXc	XcXcX	
A	234	40	8	80	BBAEB	CDABA	cccc	XXccc	
B	236	15	4	40	AAABC	ADDEC	cXccX	XXXXc	
C	239	61	8	80	BEECE	EDDCE	ccXcX	cccc	
C	240	62	7	70	BEECB	BDACE	ccXcc	XcXcc	
A	241	42	5	50	ECAED	DAABC	XXccX	XcccX	
D	242	96	5	50	EECBA	EBEBC	XcXcX	XcccX	
C	246	35	4	40	ABECE	EDCDE	XXXcX	ccXXc	
B	248	88	9	90	ADABA	DECAE	cccc	ccccX	

D	249	41	8	80	BEDBB	CBCBD	cccc	ccXcX
D	250	38	5	50	CDDBC	CACBE	XXccX	cXXcc
B	254	33	8	80	ADABE	DEAAC	ccccX	ccXcc
C	257	7	6	60	EBBCD	EDDBE	XXccX	cccXc
D	262	144	5	50	BECBA	CABBC	ccXcX	cXXcX
A	265	43	5	50	EBAED	EEABC	XcccX	XXccX
A	268	51	3	30	ACABB	DAEAC	XXcXc	XcXXX
D	270	45	7	70	BECBA	CBABE	ccXcX	ccXcc
A	271	16	8	80	EBAEB	BAADA	Xcccc	cccXc
B	274	19	8	80	ADABA	DDCCC	cccc	cXcXc
D	275	83	8	80	BECBE	CBEBE	ccXcX	cccc
D	276	10	3	30	EEDBC	ACBED	XcccX	XXXXX
D	278	54	4	40	BECBD	CACEC	ccXcX	cXXXX
C	279	135	7	70	BEECB	DDDCA	ccXcc	XcccX
D	285	89	4	40	CDDAB	CACBD	XXcXc	cXXcX
D	286	147	7	70	BDCBB	CAEBE	cXXcc	cXccc
A	287	84	8	80	BBAED	BAAAA	ccccX	cccXc
A	289	118	7	70	BBABD	BAAAA	cccXX	cccXc
B	292	34	7	70	ABABA	DDEAC	cXccc	cXXcc
A	293	11	8	80	BBAEB	CAABD	cccc	XcccX
C	295	126	7	70	BEBCD	EDAAE	ccccX	ccXXc
A	296	160	8	80	BBABB	CAABA	cccXc	Xcccc
C	297	37	7	70	BEWEB	ADDCB	cccXc	XcccX
B	301	149	6	60	ADABD	ECCBC	ccccX	XXcXc
D	302	163	6	60	BDDCB	CEBBE	cXcXc	cXXcc
B	303	25	6	60	ADCBC	CEDAC	ccXcX	XcXcc
C	307	82	7	70	BBBCD	EDDBE	cXccX	cccXc
B	311	139	8	80	ADABA	DECCD	cccc	cccXX
B	317	143	5	50	ABABB	AEEAB	cXccX	XcXcX
B	318	104	7	70	ADABB	DECCD	ccccX	cccXX
A	319	146	3	30	BAEBB	BEEDD	cXXXc	cXXXX
D	320	27	8	80	EECBB	CBEBE	XcXcc	cccc
C	321	121	7	70	BEBCB	CDABE	cccc	XcXXc
C	324	76	7	70	BEBCD	ADACE	ccccX	XcXcc
D	329	141	8	80	EECBB	CBEBE	XcXcc	cccc

C	334	47	5	50	AECED	EDECE	XcXXX	ccXcc
C	335	50	6	60	EEBCD	EDABE	XcccX	ccXXc
A	337	20	8	80	EBAEB	BEABA	Xcccc	cXccc
D	340	130	5	50	EBDDB	CADBE	XXcXc	cXXcc
A	341	57	6	60	BBAAB	DDADA	cccXc	XXcXc
B	342	6	8	80	ADABA	DEDAB	ccccc	ccXcX
B	343	24	5	50	ABABA	ECDAD	cXccc	XXXcX
A	345	114	7	70	ABAEB	CAADA	Xcccc	XccXc
A	348	95	6	60	BBABB	EEABB	cccXc	XXccX
C	354	29	6	60	ABBCB	EDABE	XXccc	ccXXc
C	356	137	5	50	ABECB	ADDCB	XXXcc	XcccX
A	363	17	7	70	BBAEB	EACBB	ccccc	XcXcX
D	364	52	3	30	CBBBA	CACBC	XXXcX	cXXcX
A	366	91	6	60	BCDBB	BACBA	cXXXc	ccXcc
A	368	30	7	70	BBAEB	CACBC	ccccc	XcXcX
D	371	26	8	80	BEDBC	CBEBc	ccccX	ccccX
D	375	142	8	80	CDDBB	CBEbE	XXccc	ccccc
B	376	94	7	70	DDABA	ACCAC	Xcccc	XXccc
D	377	1	7	70	BDDEB	CBEBD	cXcXc	ccccX
A	385	112	6	60	ABABB	CAABB	XccXc	XcccX
C	387	77	9	90	EEBCB	EDDCE	Xcccc	ccccc
C	391	53	8	80	AEBCD	EDDCE	XcccX	ccccc
B	392	70	4	40	BDEDE	DDEAC	XcXXX	cXXcc
C	393	36	5	50	DBECB	ADDCB	XXXcc	XcccX
C	397	123	6	60	BBBCB	ADCAE	cXccc	XcXXc
B	400	9	5	50	ABABA	ECDAD	cXccc	XXXcX
D	401	140	2	20	EDDEA	CEBCC	XXcXX	cXXXX
A	404	133	6	60	EBABD	CAABA	XccXX	Xcccc
D	407	117	2	20	CBCEA	CAACE	XXXXX	cXXXc
B	408	79	9	90	ADABA	DECDC	ccccc	cccXc
D	410	31	8	80	BEDBA	CBBBE	ccccX	ccXcc
A	412	98	8	80	BBAEB	CAADA	ccccc	XccXc
C	414	56	6	60	ABBCD	EDCCE	XXccX	ccXcc
D	416	156	2	20	CDABA	EEDBC	XXXcX	XXXcX
B	419	92	6	60	ABABA	AEDEC	cXccc	XcXXc

A	420	136	7	70	BBACB	CAABB	cccXc	XcccX
C	424	21	3	30	CEEED	EECAE	XcXXX	cXXXc
B	426	18	5	50	ABBBA	ECCDC	cXXcc	XXcXc
C	428	69	7	70	DEECB	EDCCE	XcXcc	ccXcc
B	431	87	6	60	ADABA	DCDCE	cccc	cXXXX
A	432	12	5	50	BBADC	CEADA	cccXX	XXcXc
A	433	100	5	50	ABABD	BDABB	XccXX	cXccX
B	434	14	4	40	ABABB	DDACB	cXccX	cXXXX
C	435	68	7	70	BBBCD	EDACE	cXccX	ccXcc
D	437	127	6	60	BDDBE	CBACE	cXccX	ccXXc
C	440	129	7	70	BABCD	EBDCE	cXccX	cXccc
A	441	132	3	30	DBAED	EDCAC	XcccX	XXXXX
C	444	86	4	40	EEBCE	ABDDC	XcccX	XXcXX
B	448	2	5	50	ACABC	DCBEC	cXccX	cXXXc
B	450	161	5	40	ABDCA	DEACC	cXXXc	ccXXc
D	452	125	6	60	EDDBD	CBABE	XXccX	ccXcc
D	453	72	5	50	CCCBB	CEDBE	XXXcc	cXXcc
D	454	58	3	30	EBCDA	CBABC	XXXXX	ccXcX
C	456	107	6	60	BBBCE	EDADE	cXccX	ccXXc
D	464	67	7	70	CDDBB	CBCBE	XXccc	ccXcc
A	465	5	4	40	AABEB	CAAAB	XXXcc	XccXX
C	468	162	8	80	BEBCB	ADACE	cccc	XcXcc
B	478	116	4	40	ABACE	DDAAD	cXcXX	cXXcX
C	480	148	7	70	BEECE	EBDCE	ccXcX	cXccc
D	483	119	8	80	BECBB	CBABE	ccXcc	ccXcc
B	490	103	5	50	ABCBE	DEBDC	cXXcX	ccXXc
C	491	155	8	80	BEBCB	ADDDE	cccc	XccXc
C	493	138	6	60	DBECB	ADDCE	XXXcc	Xcccc
D	494	81	6	60	CDDBC	CAEBE	XXccX	cXccc
C	495	8	8	80	AEBCB	EDACE	Xcccc	ccXcc
B	498	48	1	10	EBACC	ADABD	XXcXX	XXXXX
A	500	105	7	70	ECACB	BAABA	XXcXc	cccc

penalty

	<b>n</b>	<b>avg</b>	<b>dev</b>	<b>min</b>	<b>max</b>
Form A	41	59	19.5	10	90
Form B	38	59.7	18	10	90

Form C	44	61.6	16.8	10	90
Form D	42	57.1	18.8	20	90
Aggregate	165	59.4	18.3	10	90